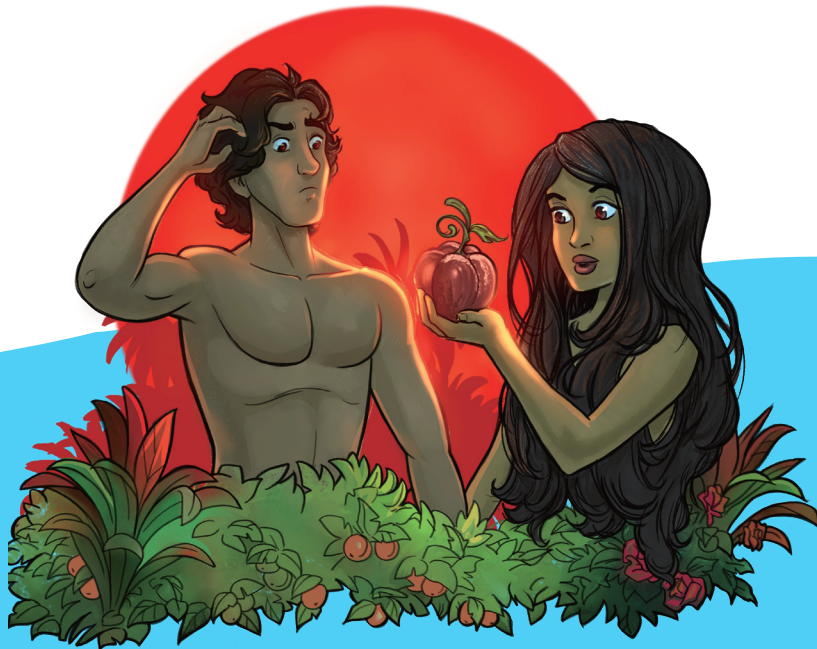


# How Do I Make Good Choices?



## **This printable pack contains the following activities:**

- Class Rules (EXP and ADV)
- In the Garden PPT Script (EXP, ADV, NAV, VOY and Multi)
- In the Garden Storytelling Pictures (EXP, ADV, NAV, VOY and Multi)
- Draw and Tell (ADV, Multi)
- Drama: Just One Bite (NAV, VOY, Multi)
- Decision-Making Process (VOY)
- Bible Passage Printout: Adam and Eve's Choice (VOY)
- Bible Timeline: Pictures 1-3 (Multi)

Contemporary English Version, Second Edition (CEV®) © 2006 American Bible Society.  
All rights reserved.

# Our Rules Are:

**Respect  
Other People**



**Listen  
to Each Other**



**Follow the Teacher's  
Instructions**



**Do  
Our Best!**



# In the Garden: PPT Script

This script accompanies the PPT slides for *In the Garden*.

## Script

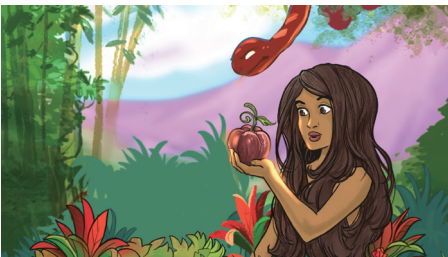


God made a very good and perfect world. God placed the first people, Adam and Eve in his garden. Their job was to look after all the animals and plants.



There were many trees with delicious fruits. Adam and Eve could eat from all of them, except one. God said, 'Don't eat from this tree, or you will die.'

Ask: Would you follow what God said?

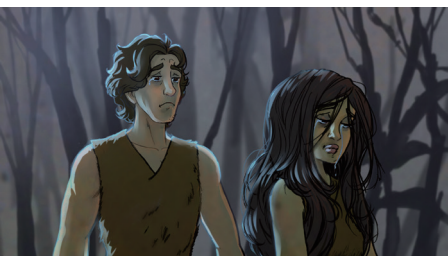


One day, the snake, who was very sneaky, came to Eve and said, 'Did God really say that you mustn't eat fruit from any tree?' Eve replied, 'God told us that we can eat from all the trees, except one. If we eat from it, we will die.'

Then the snake said to Eve, 'You won't die, it will make you clever, like God.' Eve looked at the fruit and saw that it looked good. She had to choose whether to follow what God said. What would she do?



Eve ate some of the fruit, and gave some to Adam. He ate some too. As soon as they did, they realised they had done the wrong thing. They heard God walking through the garden and they ran and hid.



Because Adam and Eve chose to disobey God, they were sent out of the garden and their lives became hard. The world was not perfect anymore and their friendship with God had been broken. But God still loved the people he had made. God would make a way for people to be friends with him again.



# In the Garden



God made a very good and perfect world. God placed the first people, Adam and Eve in his garden. Their job was to look after all the animals and plants.



# In the Garden

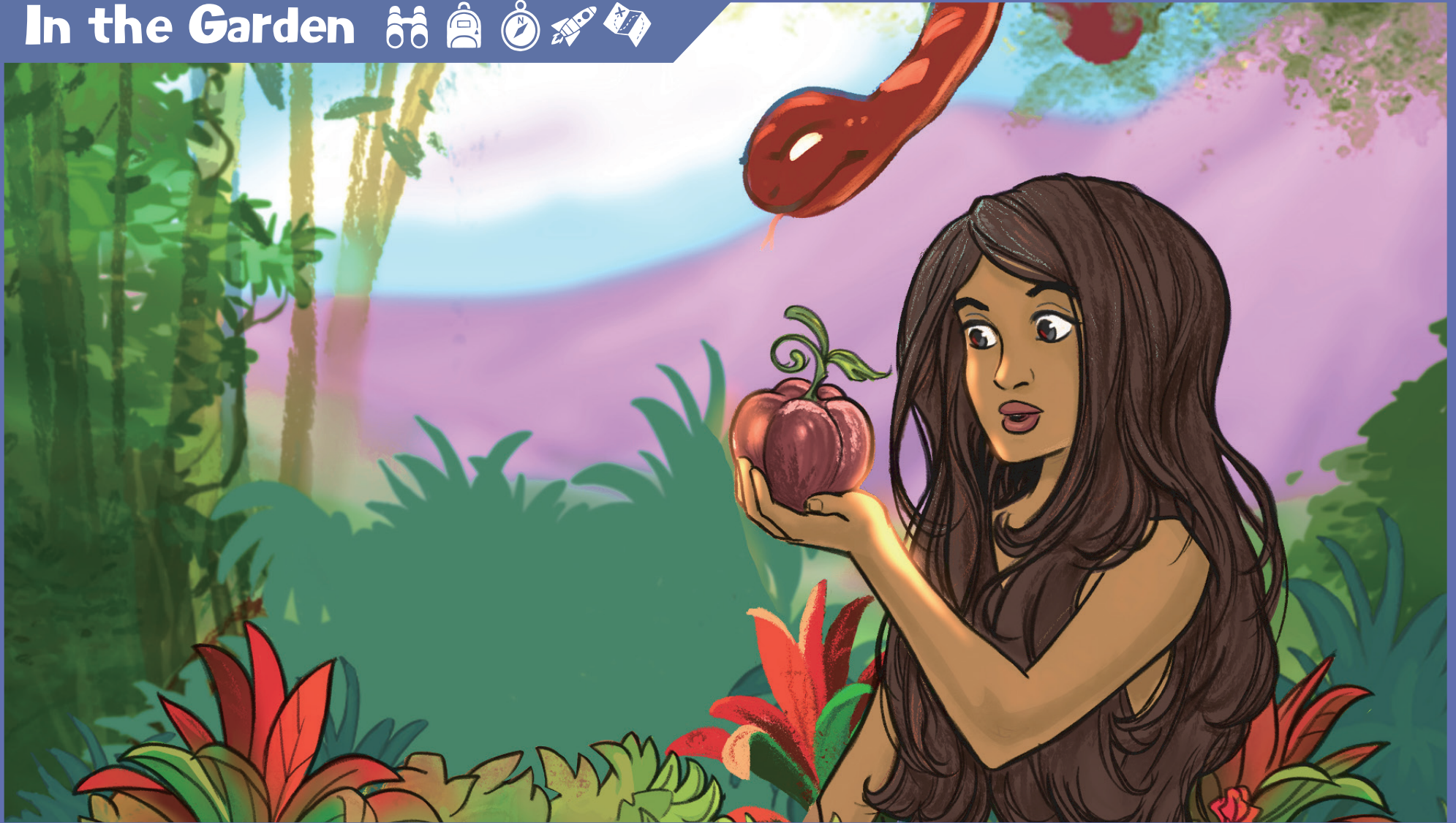


There were many trees with delicious fruits. Adam and Eve could eat from all of them, except one. God said, 'Don't eat from this tree, or you will die.'

Ask: Would you follow what God said?



# In the Garden

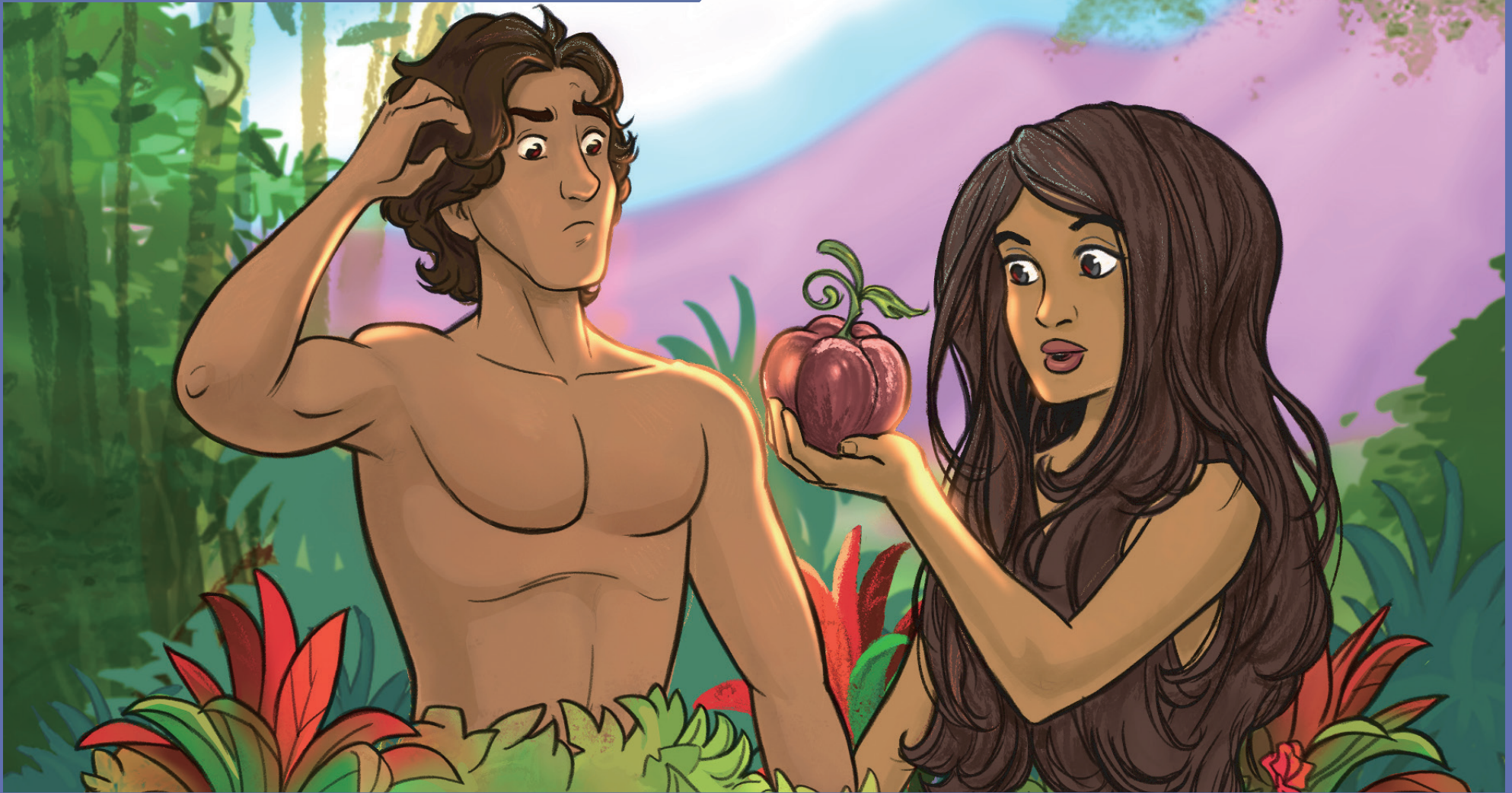


One day, the snake, who was very sneaky, came to Eve and said, 'Did God really say that you mustn't eat fruit from any tree?' Eve replied, 'God told us that we can eat from all the trees, except one. If we eat from it, we will die.'

Then the snake said to Eve, 'You won't die, it will make you clever, like God.' Eve looked at the fruit and saw that it looked good. She had to choose whether to follow what God said. What would she do?



# In the Garden



Eve ate some of the fruit, and gave some to Adam. He ate some too. As soon as they did, they realised they had done the wrong thing. They heard God walking through the garden and they ran and hid.

# In the Garden



Because Adam and Eve chose to disobey God, they were sent out of the garden and their lives became hard. The world was not perfect anymore and their friendship with God had been broken. But God still loved the people he had made. God would make a way for people to be friends with him again.

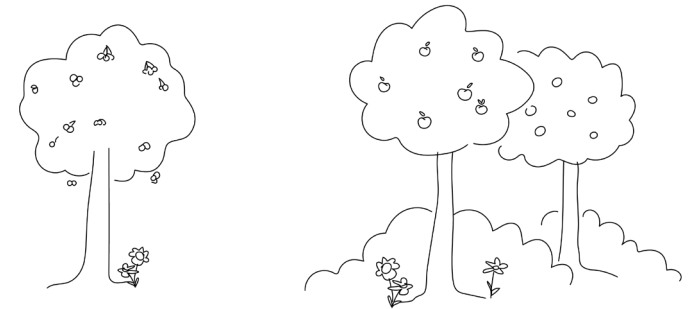


# Draw and Tell (including selected verses from Genesis 2-3 CEV)



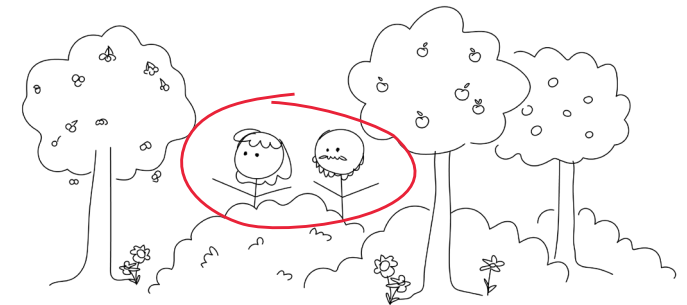
**Say:** When God made the world, including all the animals, plants and people, it was very good. God made Adam and Eve and placed them in a beautiful garden.

**Read:** The Lord God placed all kinds of beautiful trees and fruit trees in the garden. Two other trees were in the middle of the garden. One of the trees gave life—the other gave the power to know the difference between right and wrong. The Lord God put the man [and the woman] in the Garden of Eden to take care of it and to look after it. But the Lord told him, “You may eat fruit from any tree in the garden, except the one that has the power to let you know the difference between right and wrong. If you eat any fruit from that tree, you will die before the day is over!” **(Draw trees.)**



**Say:** It's hard avoiding something you're told not to. Hands up if you've had that problem?

At first Adam and Eve followed what God said. **(Draw Adam and Eve.)**



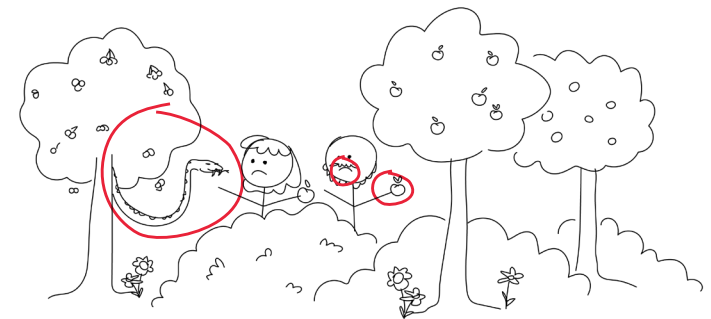
**Say:** But then something happened.

**Read:** The snake was sneakier than any of the other wild animals that the Lord God had made. **(Draw the snake.)** One day it came to the woman and asked, “Did God tell you not to eat fruit from any tree in the garden?”

The woman answered, “God said we could eat fruit from any tree in the garden, except the one in the middle. He told us not to eat fruit from that tree or even to touch it. If we do, we will die.”

“No, you won't!” the snake replied. “God understands what will happen on the day you eat fruit from that tree. You will see what you have done, and you will know the difference between right and wrong, just as God does.”

The woman stared at the fruit. It looked beautiful and tasty. She wanted the wisdom that it would give her, and she ate some of the fruit. **(Draw Adam and Eve with the fruit.)** Her husband was there with her, so she gave some to him, and he ate it too. Right away they saw what they had done. **(Draw sad faces.)**

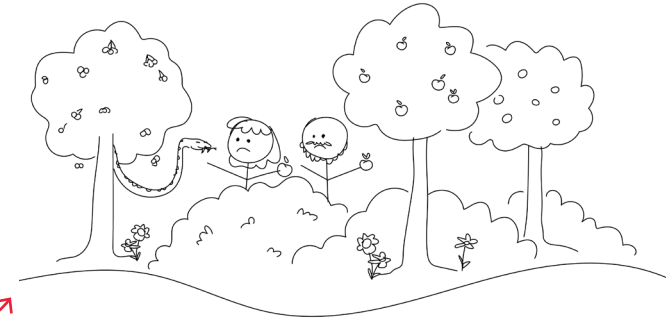


# Draw and Tell (cont)



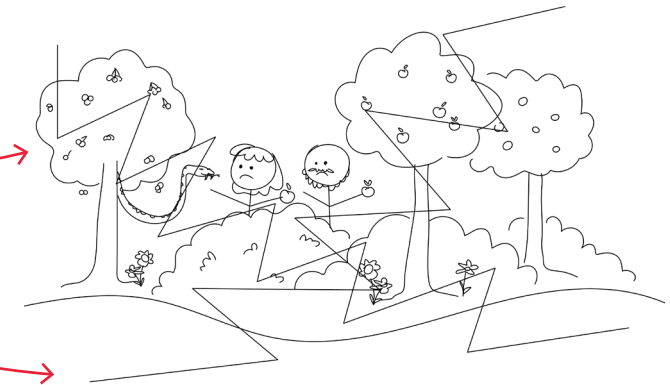
Late in the afternoon a breeze began to blow, and the man and woman heard the Lord God walking in the garden. They were frightened and hid behind some trees.

**(Draw a wavy line to represent God walking in the garden.)**



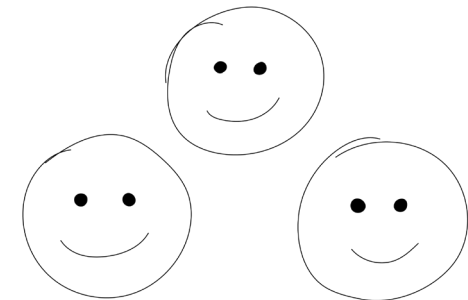
**Say:** God knew what had happened. Now everything would be different. Adam and Eve hid from God - people wouldn't always be friends with God. Because they were not friends with God, they wouldn't follow God's way. They wouldn't always look after each other or look after God's world. Things would be sad and broken.

**(Draw broken lines through the picture.)**



**Ask:** Is this the end of the story?

**Say:** No way. God still had a plan, a plan to fix the friendship between people and God. We'll be discovering God's plan this year, and how we can choose to be part of it too.





# Drama: Just One Bite



**Characters:** Narrator 1, Narrator 2, Eve, Adam and Snake.



## Script

**Narrator 1:** Wow, isn't this an amazing world God has made?

**Narrator 2:** It's so big, and so beautiful, and so peaceful. I could spend the whole day just looking at it.

**Narrator 1:** It's just... wonderful.

**Narrator 2:** And so much variety. Look, there's even so many different kinds of fruit.

**Narrator 1:** They look delicious.

**Narrator 2:** God says they can eat any of them.

**Narrator 1:** Adam and Eve, those people he made? They can eat any of these sweet, juicy fruits any time they want?

**Narrator 2:** Yes. Except for that tree right in the middle, of course. The one that helps you know right from wrong. That one's off limits. If they eat that, they'll die.

**Narrator 1:** Oh. Well. It's just one tree, in the middle of the garden. There's so many other good fruits.

**Narrator 2:** Exactly. It's all good. Just the way God made it.

**Narrator 1:** Wait, hold on. Who's that?

**Narrator 2:** Oh, no! It's that snake!

**Narrator 1:** He wouldn't...

**Narrator 2:** He would... he wants to spoil God's perfect world.

**Snake:** Sssss. Hey Eve. Did God really sssay you couldn't eat any fruitsss in thiss beautiful garden?

**Eve:** No. We can eat any fruit we like. Except that one in the middle. If we eat that, we'll die.

**Snake:** Don't be sssilly. You won't die. Ssss. God jussst doesssn't want you to have it. If you eat it...ssss.... you'll be wissse like him.

**Eve:** Well, it does look good.

**Snake:** Yessss it doesssss. Eat it.

**Eve:** I'll just have one bite.

**Narrator 1:** No!!!

**Eve:** Mmm, delicious. Here Adam, have some!

**Narrator 2:** Noo!!!

**Adam:** Sure. Yum.

**Eve:** Wait... (looks sad) we weren't supposed to do that.

**Adam:** (looked worried) Yeah, that was a bad idea. Why did you give me the fruit?

**Eve:** It was the snake's idea.

**Adam:** Is that God coming now?

**Eve:** Oh no!

**Adam:** Quick, hide.

**Narrator 1:** Oh no! It's ruined.

**Narrator 2:** It was so perfect. And now. It's all messed up.

**Narrator 1:** Look, they're blaming each other. They're not friends anymore.

**Narrator 2:** They're not friends with God either. Oh no!

# Drama: Just One Bite (cont)



**Characters:** Narrator 1, Narrator 2, Eve, Adam and Snake.

## Script

**Narrator 1:** Oh this is terrible. They have to leave God's garden. It will never be the same again.

**Narrator 2:** Wait... wait. God is caring for Adam and Eve.

**Narrator 1:** How?

**Narrator 2:** God is showing them his love and care. God has a plan to fix everything, even though Adam and Eve don't know it.

**Narrator 1:** But everything is broken...

**Narrator 2:** He will send someone who will fix the brokenness and make everything right and true again.

**Narrator 1:** That's great news!

**The End**





**1.** How do people make decisions?

**2.** How do you make decisions?

**3.** Who might influence you when you make a decision?

---

**1.** How do people make decisions?

**2.** How do you make decisions?

**3.** Who might influence you when you make a decision?

---

**1.** How do people make decisions?

**2.** How do you make decisions?

**3.** Who might influence you when you make a decision?

---



## Genesis 2

<sup>9</sup> The Lord God filled the garden with all kinds of beautiful trees and fruit trees. Two other trees were in the middle of the garden. One of these gave life—the other gave the wisdom to know the difference between right and wrong.

<sup>15</sup> The Lord God put the man in the Garden of Eden to take care of it and to look after it. <sup>16</sup> But the Lord told him, “You may eat fruit from any tree in the garden, <sup>17</sup> except the one that has the power to let you know the difference between right and wrong. If you eat any fruit from that tree, you will die before the day is over!”

## Genesis 3

<sup>1</sup> The snake was sneakier than any of the other wild animals that the Lord God had made. One day it came to the woman and asked, “Did God tell you not to eat fruit from any tree in the garden?”

<sup>2</sup> The woman answered, “God said we could eat fruit from any tree in the garden, <sup>3</sup> except the one in the middle. He told us not to eat fruit from that tree or even to touch it. If we do, we will die.”

<sup>4</sup> “No, you won’t!” the snake replied. <sup>5</sup> “God understands what will happen on the day you eat fruit from that tree. You will see what you have done, and you will know the difference between right and wrong, just as God does.”

<sup>6</sup> The woman stared at the fruit. It looked beautiful and tasty. She wanted the wisdom that it would give her, and she ate some of the fruit. Her husband was there with her, so she gave some to him, and he ate it too.

<sup>8</sup> Late in the afternoon, when the breeze began to blow, the man and woman heard the Lord God walking in the garden. So they hid behind some trees.

<sup>9</sup> The Lord God called out to the man and asked, “Where are you?”

<sup>11</sup> ...God asked. “Did you eat any fruit from that tree in the middle of the garden?”

<sup>12</sup> “It was the woman you put here with me,” the man said. “She gave me some of the fruit, and I ate it.”

<sup>13</sup> The Lord God then asked the woman, “What have you done?”

“The snake tricked me,” she answered, “and I ate some of that fruit.”

<sup>21</sup> Then the Lord God made clothes out of animal skins for the man and his wife.

<sup>22</sup> The Lord said, “They now know the difference between right and wrong, just as we do. But they must not be allowed to eat fruit from the tree that lets them live forever.” <sup>23</sup> So the Lord God sent them out of the Garden of Eden, where they would have to work the ground from which the man had been made.



# Timeline: Creation



In this unit we have learned from the Bible that God made everything. When God made the world, it was very good. We have learned that God loves and cares for people.



## Timeline: A Wrong Choice



When Adam and Eve, the first people, chose to turn their back on God, everything changed: their friendship with each other and with God was damaged. The world was no longer very good, but broken. People cannot fix this problem on their own.



# Timeline: People Today



But God still loved people and God had a plan! A plan to fix the friendship between people and himself. A plan to send someone who would come and make everything good and right again. We'll be discovering God's plan this year, and how we can choose to be part of it too.

Ask: So, how would you now answer the question, 'Who is God?'