

LIFE ISN'T EASY



WHAT DO YOU THINK

Who did Joseph have trouble getting on with?

Did God care?

Does God care about you and your problems?

FIND OUT THE SPECIAL MESSAGE FOR YOU.

Cross out every fourth letter and use the other letters to find the answer.

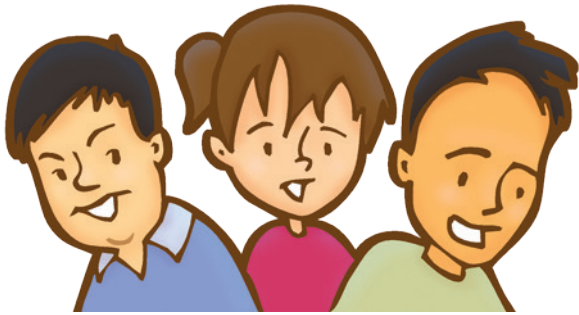
**THE/LORJDHAQSPRYOMIASSEDFHEWCILLBNOTS/L
EAKVEOZRDELSEKDTUSX.HEB/REWTS 13:5**

h r s m l

e d

b 13:5

Sometimes life isn't easy



Some things I find hard are:

Did you know you can pray to God to help you?
You may quietly talk to God anytime.

Imagine you are Joseph and have just been sold by your brothers. Record your thoughts.

